

## \$339,888 - 4229 30 Street, Edmonton

MLS® #E4436369

**\$339,888**

3 Bedroom, 2.50 Bathroom, 1,292 sqft

Condo / Townhouse on 0.00 Acres

Larkspur, Edmonton, AB

This bright end unit townhouse in Larkspur Landing offers unbeatable value in a sought-after, family-friendly complex. Enjoy the convenience of living minutes from everythingâ€”walking distance to schools, parks, grocery stores, restaurants, and major amenities. Whether you commute downtown, to the south side, or elsewhere, youâ€™ll love the quick access to public transit, Whitemud Drive, and Anthony Henday. Inside, the open-concept layout is both spacious and functional, filled with natural light throughout. The kitchen features upgraded granite countertops, a pantry, and access to your own private balconyâ€”perfect for morning coffee or evening relaxation. Upstairs, youâ€™ll find three generously sized bedrooms and two full bathrooms, including a large primary suite with its own ensuite. With low condo fees, ample storage, and a smart layout, this home is ideal for families, professionals, or investors looking for a well-maintained property in a convenient southeast location.

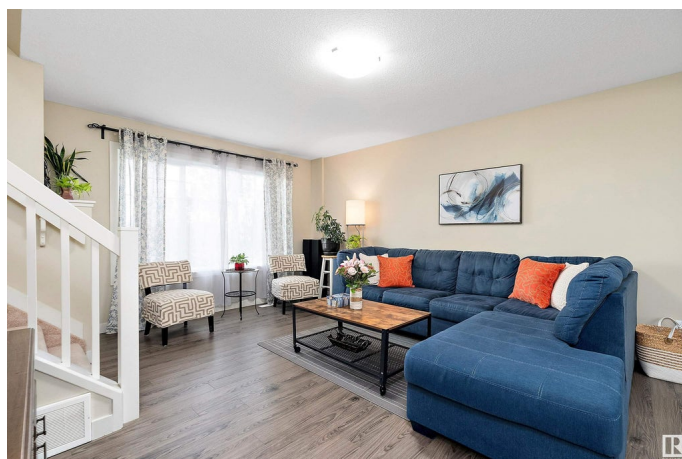
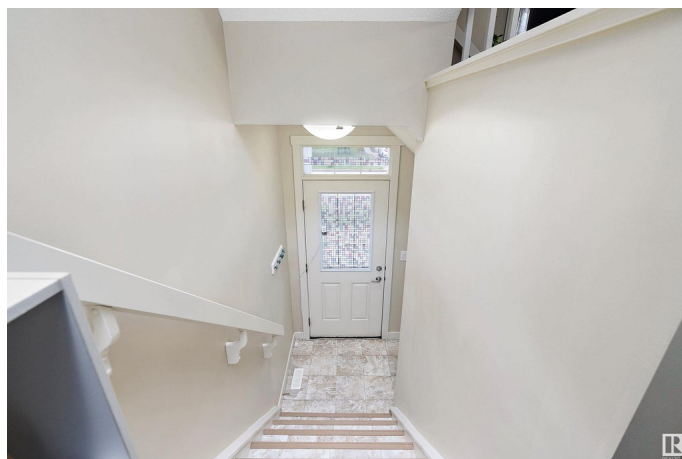
Built in 2016

### Essential Information

MLS® # E4436369

Price \$339,888

Bedrooms 3



Bathrooms	2.50
Full Baths	2
Half Baths	1
Square Footage	1,292
Acres	0.00
Year Built	2016
Type	Condo / Townhouse
Sub-Type	Townhouse
Style	2 Storey
Status	Active

### Community Information

Address	4229 30 Street
Area	Edmonton
Subdivision	Larkspur
City	Edmonton
County	ALBERTA
Province	AB
Postal Code	T6X 1V1

### Amenities

Amenities	Detectors Smoke, No Animal Home, No Smoking Home, Parking-Visitor, See Remarks
Parking	Double Garage Attached

### Interior

Interior Features	ensuite bathroom
Appliances	Dishwasher-Built-In, Dryer, Microwave Hood Fan, Refrigerator, Stove-Electric, Washer, Window Coverings
Heating	Forced Air-1, Natural Gas
Stories	3
Has Basement	Yes
Basement	Partial, Partially Finished

### Exterior

Exterior	Wood, Vinyl
Exterior Features	Playground Nearby, Public Transportation, Schools, Shopping Nearby, See Remarks
Roof	Asphalt Shingles

Construction	Wood, Vinyl
Foundation	Concrete Perimeter

**School Information**

Elementary	Velma E. Baker School
Middle	Thelma Chalifoux School
High	Elder Dr. Francis Whiskeyj

**Additional Information**

Date Listed	May 14th, 2025
Days on Market	5
Zoning	Zone 30
Condo Fee	\$195

DATA IS DEEMED RELIABLE BUT IS NOT GUARANTEED ACCURATE BY THE REALTORS® ASSOCIATION OF EDMONTON. COPYRIGHT 2025 BY THE REALTORS® ASSOCIATION OF EDMONTON. ALL RIGHTS RESERVED.Trademarks are owned or controlled by the Canadian Real Estate Association (CREA) and identify real estate professionals who are members of CREA (REALTOR®, REALTORS®) and/or the quality of services they provide (MLS®, Multiple Listing Service®)

Listing information last updated on May 18th, 2025 at 10:32pm MDT