

## **\$649,000 - 130 Parkview Drive, Wetaskiwin**

MLS® #E4436404

### **\$649,000**

4 Bedroom, 3.50 Bathroom, 2,716 sqft

Single Family on 0.00 Acres

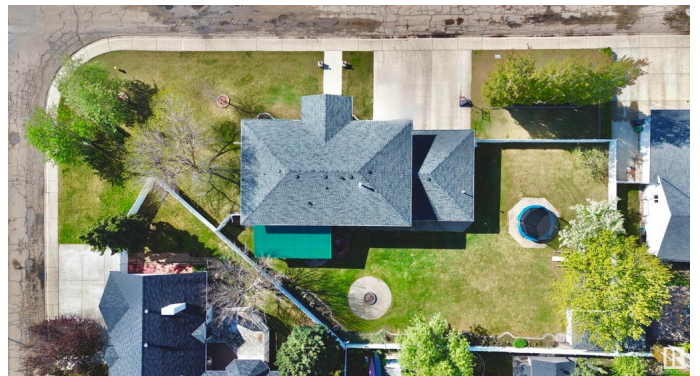
Parkside, Wetaskiwin, AB

This GRAND Executive home must be seen to be appreciated. This home is on a massive .4 acre lot and the home was Custom built with great upgrades! The large chefs kitchen has Corian tops, gas range and a wall oven. No shortage of space leaves your choice of 2 dining rooms and an expansive great room with 17' ceilings! The grand centre staircase leads to a well designed family space with the kids and the primary bedrooms located on either wing of the home. A large functional laundry rounds the central upstairs. There are few options for office/craft rooms, basement has a 4th bedroom, Games area and a TV room with bar and gas fireplace! The basement has a convenient staircase to the Triple Heated garage. Outside is a Private, park-like back yard w/MAINTENANCE FREE vinyl fence built on a concrete curb! Shed even has full wiring and a concrete floor! Too many upgrades to list! 3 furnaces! Central Air! 2019 Roof! Underground Sprinkler! New Fridge! Low Voltage lighting! Covered back Patio!

Built in 1997

### **Essential Information**

MLS® #	E4436404
Price	\$649,000
Bedrooms	4



Bathrooms	3.50
Full Baths	3
Half Baths	1
Square Footage	2,716
Acres	0.00
Year Built	1997
Type	Single Family
Sub-Type	Detached Single Family
Style	2 Storey
Status	Active

### Community Information

Address	130 Parkview Drive
Area	Wetaskiwin
Subdivision	Parkside
City	Wetaskiwin
County	ALBERTA
Province	AB
Postal Code	T9A 3J6

### Amenities

Amenities	Air Conditioner, Fire Pit, No Smoking Home, Sprinkler Sys-Underground
Parking	Triple Garage Attached

### Interior

Interior Features	ensuite bathroom
Appliances	Dishwasher-Built-In, Dryer, Freezer, Garage Control, Garage Opener, Hood Fan, Storage Shed, Stove-Gas, Washer, Window Coverings, Refrigerators-Two
Heating	Forced Air-1, Natural Gas
Fireplace	Yes
Fireplaces	Oak Surround
Stories	3
Has Basement	Yes
Basement	Full, Finished

### Exterior

Exterior	Wood, Brick, Vinyl
Exterior Features	Corner Lot, Fenced, Flat Site, Golf Nearby, Landscaped, Low

	Maintenance Landscape
Roof	Asphalt Shingles
Construction	Wood, Brick, Vinyl
Foundation	Concrete Perimeter

### **Additional Information**

Date Listed	May 14th, 2025
Days on Market	3
Zoning	Zone 80

DATA IS DEEMED RELIABLE BUT IS NOT GUARANTEED ACCURATE BY THE REALTORS® ASSOCIATION OF EDMONTON. COPYRIGHT 2025 BY THE REALTORS® ASSOCIATION OF EDMONTON. ALL RIGHTS RESERVED. Trademarks are owned or controlled by the Canadian Real Estate Association (CREA) and identify real estate professionals who are members of CREA (REALTOR®, REALTORS®) and/or the quality of services they provide (MLS®, Multiple Listing Service®)

Listing information last updated on May 17th, 2025 at 9:17pm MDT