

\$1,048,800 - 4535 26 Avenue, Edmonton

MLS® #E4436762

\$1,048,800

6 Bedroom, 6.50 Bathroom, 3,658 sqft

Single Family on 0.00 Acres

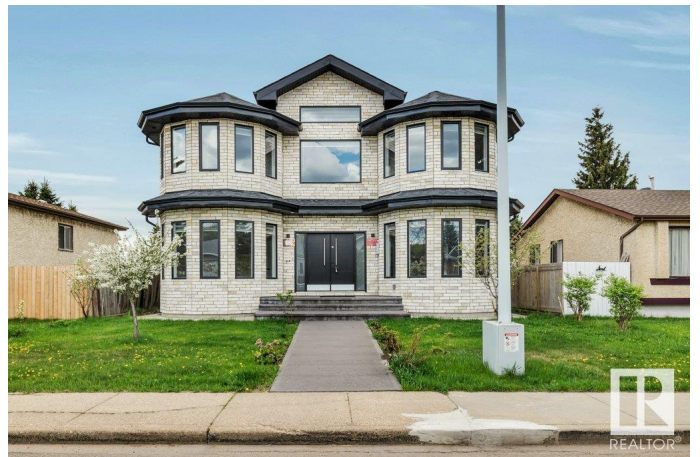
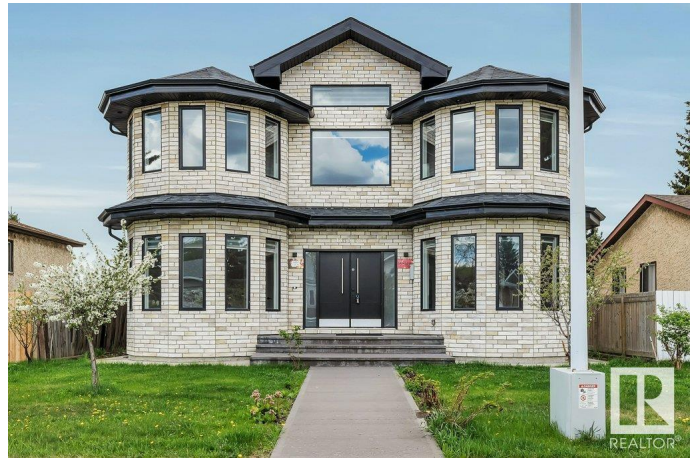
Weinlos, Edmonton, AB

Welcome to Weinlos! Welcome to this luxurious estate residence boasting over 3,657 sqft. of above-grade living space & a fully finished basement of more than 1,718 sqft, this home is perfectly designed for large families or multi-generational living. This meticulously maintained property features 6 spacious bedrooms & 6.5 modern bathrooms! Walk into the spacious living area with BAY WINDOWS & FORMAL DINING ROOM w/ CERAMIC TILE FLOORS throughout the main floor! The heart of the home includes a dream chef's kitchen w/ modern modern cabinetry while the SPICE KITCHEN offers flexibility for extended family or entertaining. The Family Rm offers 20 ft ceilings w/ ceiling to floor picture windows & modern fireplace! The solid wood DOUBLE STAIRCASE leads you to the luxurious bedrooms all w/ built-in CEILING FANS & 3x ensuite baths & 1 common bath! The fully developed basement includes a generous bonus room, ideal for a home theatre, fitness area, or playroom. Excellently located in a family friendly community!

Built in 2015

Essential Information

MLS® #	E4436762
Price	\$1,048,800



Bedrooms	6
Bathrooms	6.50
Full Baths	6
Half Baths	1
Square Footage	3,658
Acres	0.00
Year Built	2015
Type	Single Family
Sub-Type	Detached Single Family
Style	2 Storey
Status	Active

Community Information

Address	4535 26 Avenue
Area	Edmonton
Subdivision	Weinlos
City	Edmonton
County	ALBERTA
Province	AB
Postal Code	T6L 4H4

Amenities

Amenities	Off Street Parking, Deck
Parking Spaces	10
Parking	Double Garage Attached

Interior

Interior Features	ensuite bathroom
Appliances	Dishwasher-Built-In, Dryer, Fan-Ceiling, Furniture Included, Garage Control, Hood Fan, Refrigerator, Stove-Countertop Gas, Stove-Electric, Washer, Window Coverings, Wet Bar
Heating	Forced Air-2, Natural Gas
Fireplace	Yes
Fireplaces	Tile Surround
Stories	3
Has Basement	Yes
Basement	Full, Finished

Exterior

Exterior	Wood, Stone, Stucco
Exterior Features	Back Lane, Fenced, Flat Site, Fruit Trees/Shrubs, Low Maintenance Landscape, Park/Reserve, Playground Nearby, Public Transportation, Schools, Shopping Nearby
Roof	Asphalt Shingles
Construction	Wood, Stone, Stucco
Foundation	Concrete Perimeter

School Information

Elementary	Weinlos School
Middle	Kate Chegwin School
High	W.P. Wagner School

Additional Information

Date Listed	May 15th, 2025
Days on Market	18
Zoning	Zone 29

DATA IS DEEMED RELIABLE BUT IS NOT GUARANTEED ACCURATE BY THE REALTORS® ASSOCIATION OF EDMONTON. COPYRIGHT 2025 BY THE REALTORS® ASSOCIATION OF EDMONTON. ALL RIGHTS RESERVED. Trademarks are owned or controlled by the Canadian Real Estate Association (CREA) and identify real estate professionals who are members of CREA (REALTOR®, REALTORS®) and/or the quality of services they provide (MLS®, Multiple Listing Service®)

Listing information last updated on June 1st, 2025 at 10:47pm MDT