

\$284,500 - 307 Morin Maze Maze, Edmonton

MLS® #E4436781

\$284,500

3 Bedroom, 1.50 Bathroom, 1,147 sqft

Condo / Townhouse on 0.00 Acres

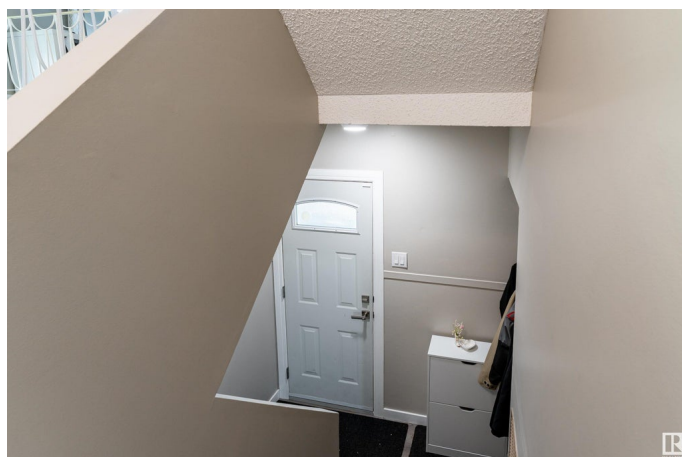
Lee Ridge, Edmonton, AB

Move-in ready 1147 sq ft end-unit townhouse with attached carport in a well-maintained complex with major upgrades: siding, windows, roof, and concrete. This unique 4-level split offers a bright layout with new flooring. The main level features the new kitchen with stainless steel appliances and quartz countertops, and the cozy living room. Up a level is a flex space and spacious primary bedroom, and the top floor has two additional bedrooms and a 4-pc bath. The basement boasts a newly finished family room and a 2-pc bath. Enjoy large windows, a small backyard, and great proximity to schools, parks, shopping, and transit.

Built in 1975

Essential Information

| | |
|----------------|-------------------|
| MLS® # | E4436781 |
| Price | \$284,500 |
| Bedrooms | 3 |
| Bathrooms | 1.50 |
| Full Baths | 1 |
| Half Baths | 1 |
| Square Footage | 1,147 |
| Acres | 0.00 |
| Year Built | 1975 |
| Type | Condo / Townhouse |



| | |
|----------|---------------|
| Sub-Type | Townhouse |
| Style | 4 Level Split |
| Status | Active |

Community Information

| | |
|-------------|---------------------|
| Address | 307 Morin Maze Maze |
| Area | Edmonton |
| Subdivision | Lee Ridge |
| City | Edmonton |
| County | ALBERTA |
| Province | AB |
| Postal Code | T6K 1V1 |

Amenities

| | |
|-----------|-------------------------------------------------|
| Amenities | No Smoking Home, Parking-Extra, Parking-Visitor |
| Parking | Front Drive Access, Single Carport |

Interior

| | |
|--------------|--------------------------------------------------------------------------------------------------------|
| Appliances | Dishwasher-Built-In, Dryer, Microwave Hood Fan, Refrigerator, Stove-Electric, Washer, Window Coverings |
| Heating | Forced Air-1, Natural Gas |
| Stories | 4 |
| Has Basement | Yes |
| Basement | Full, Finished |

Exterior

| | |
|-------------------|--------------------------------------------------------------------|
| Exterior | Wood, Vinyl |
| Exterior Features | Playground Nearby, Public Transportation, Schools, Shopping Nearby |
| Roof | Asphalt Shingles |
| Construction | Wood, Vinyl |
| Foundation | Concrete Perimeter |

Additional Information

| | |
|----------------|----------------|
| Date Listed | May 15th, 2025 |
| Days on Market | 4 |
| Zoning | Zone 29 |
| Condo Fee | \$300 |

DATA IS DEEMED RELIABLE BUT IS NOT GUARANTEED ACCURATE BY THE REALTORS® ASSOCIATION OF EDMONTON. COPYRIGHT 2025 BY THE REALTORS® ASSOCIATION OF EDMONTON. ALL RIGHTS RESERVED. Trademarks are owned or controlled by the Canadian Real Estate Association (CREA) and identify real

estate professionals who are members of CREA (REALTOR®®, REALTORS®®) and/or the quality of services they provide (MLS®®, Multiple Listing Service®®)

Listing information last updated on May 18th, 2025 at 10:32pm MDT