

\$450,000 - 3035 142 Avenue, Edmonton

MLS® #E4444410

\$450,000

5 Bedroom, 3.00 Bathroom, 1,325 sqft
Single Family on 0.00 Acres

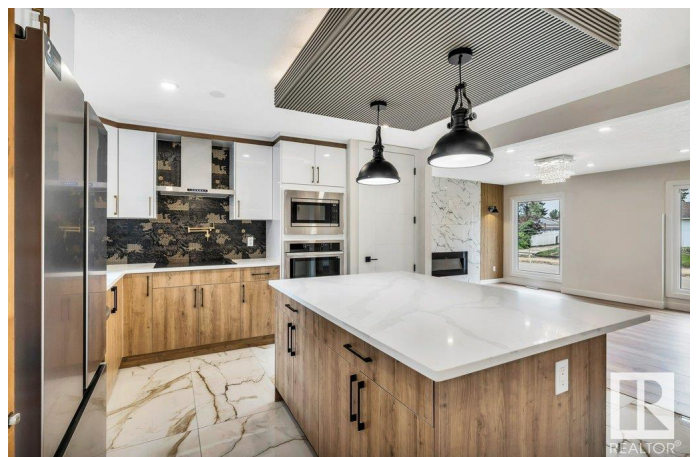
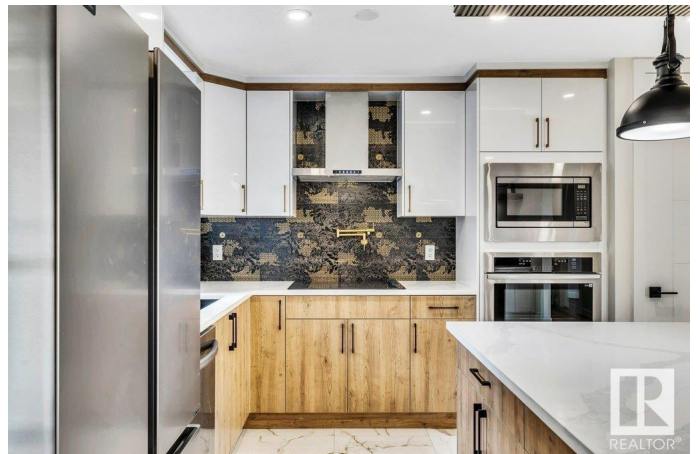
Hairsine, Edmonton, AB

Welcome to this beautifully RENOVATED 1325 sq ft bungalow in family friendly Hairsine featuring a basement suite with SEPARATE ENTRANCE. The main floor offers 3 bedrooms, 2 full baths (primary bedroom has EN SUITE bath), an entertainer's kitchen, wet bar, living room with fireplace and dining room. The lower level is self-contained with a separate entrance, 2 generously sized bedrooms, a kitchen, and its own laundry—an ideal mortgage helper! Car enthusiasts will love the oversized, heated double garage/workshop with plenty of storage. Key features also include all BRAND NEW appliances, NEW tankless hot water heater and high efficiency furnace. Outside, enjoy the covered deck and a partially fenced backyard with ample space to garden. Located close to schools, parks and shopping this home is perfect any family or savvy investor.

Built in 1979

Essential Information

MLS® #	E4444410
Price	\$450,000
Bedrooms	5
Bathrooms	3.00
Full Baths	3
Square Footage	1,325



Acres	0.00
Year Built	1979
Type	Single Family
Sub-Type	Detached Single Family
Style	Bungalow
Status	Active

Community Information

Address	3035 142 Avenue
Area	Edmonton
Subdivision	Hairsine
City	Edmonton
County	ALBERTA
Province	AB
Postal Code	T5Y 1J1

Amenities

Amenities	On Street Parking, Deck, Hot Water Instant, Hot Water Natural Gas, See Remarks
Parking	Double Garage Detached, Heated, Insulated, Over Sized

Interior

Interior Features	ensuite bathroom
Appliances	Dishwasher-Built-In, Hood Fan, Oven-Built-In, Oven-Microwave, Stove-Countertop Electric, Stove-Electric, Dryer-Two, Refrigerators-Two, Washers-Two
Heating	Forced Air-1, Natural Gas
Fireplace	Yes
Fireplaces	Tile Surround
Stories	2
Has Suite	Yes
Has Basement	Yes
Basement	Full, Finished

Exterior

Exterior	Wood, Stucco
Exterior Features	Public Transportation, Schools, Shopping Nearby, See Remarks, Partially Fenced
Roof	Asphalt Shingles

Construction	Wood, Stucco
Foundation	Concrete Perimeter

Additional Information

Date Listed	June 25th, 2025
Days on Market	20
Zoning	Zone 35

DATA IS DEEMED RELIABLE BUT IS NOT GUARANTEED ACCURATE BY THE REALTORS® ASSOCIATION OF EDMONTON. COPYRIGHT 2025 BY THE REALTORS® ASSOCIATION OF EDMONTON. ALL RIGHTS RESERVED.Trademarks are owned or controlled by the Canadian Real Estate Association (CREA) and identify real estate professionals who are members of CREA (REALTOR®, REALTORS®) and/or the quality of services they provide (MLS®, Multiple Listing Service®)

Listing information last updated on July 14th, 2025 at 8:32pm MDT