

\$293,000 - 64 7293 South Terwillegar Drive, Edmonton

MLS® #E4446865

\$293,000

2 Bedroom, 2.50 Bathroom, 1,538 sqft

Condo / Townhouse on 0.00 Acres

South Terwillegar, Edmonton, AB

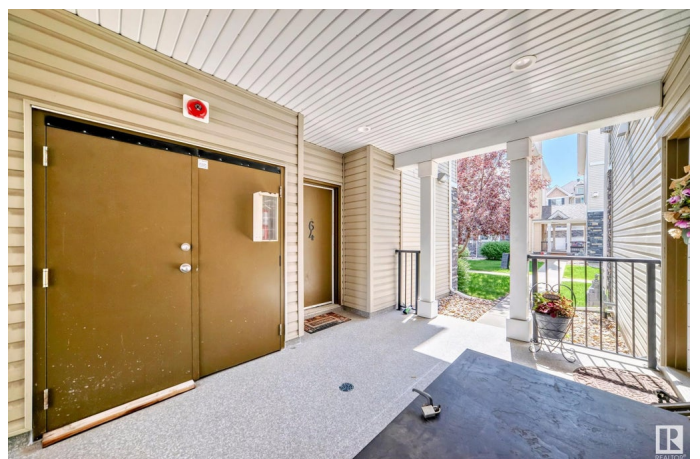
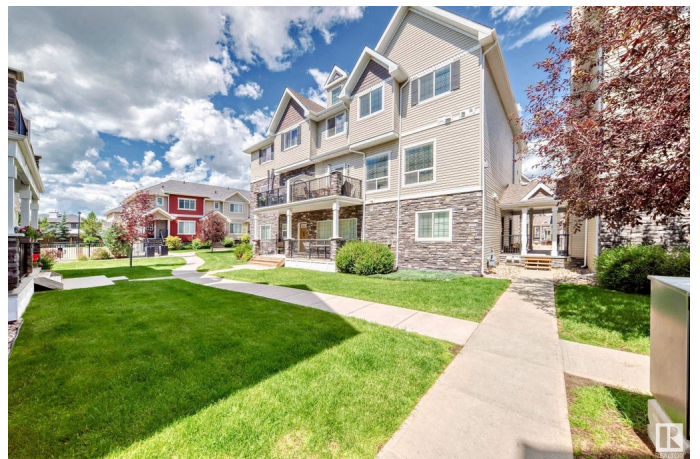
This modern south-facing townhouse features expansive windows that flood the open-concept main floor with natural light. The sleek kitchen boasts ample cabinetry, stainless steel appliances, and modern fixturesâ€”perfect for entertaining. Enjoy cozy evenings by the fireplace or step out onto your private balcony. Plus, with air conditioning throughout, you can stay cool and comfortable year-round. Convenient main-floor laundry and half bath add to the comfort. Upstairs offers two spacious bedrooms and two full bathrooms, including a stunning primary bedroom with vaulted ceiling, huge walk-in closet, and spa-like ensuite with soaker tub and glass shower. The second bedroom also includes a generous closet and nearby full bath. The partially finished basement has roughed-in plumbing for a future bathroom. An attached garage completes the package. A perfect blend of comfort, function, and styleâ€”this home has it all! Condo fees include utilities (\$512.10 + \$198.63 for heat, hot water and gas).

Built in 2008

Essential Information

MLS® # E4446865

Price \$293,000



Bedrooms	2
Bathrooms	2.50
Full Baths	2
Half Baths	1
Square Footage	1,538
Acres	0.00
Year Built	2008
Type	Condo / Townhouse
Sub-Type	Townhouse
Style	2 Storey
Status	Active

Community Information

Address	64 7293 South Terwillegar Drive
Area	Edmonton
Subdivision	South Terwillegar
City	Edmonton
County	ALBERTA
Province	AB
Postal Code	T6R 0N5

Amenities

Amenities	Air Conditioner, Carbon Monoxide Detectors, Detectors Smoke, Television Connection
Parking	Single Garage Attached

Interior

Interior Features	ensuite bathroom
Appliances	Dishwasher-Built-In, Dryer, Microwave Hood Fan, Refrigerator, Stove-Electric, Washer, Window Coverings
Heating	Forced Air-1, Natural Gas
Stories	3
Has Basement	Yes
Basement	Full, Partially Finished

Exterior

Exterior	Wood, Stone, Vinyl
Exterior Features	Golf Nearby, Landscaped, Playground Nearby, Shopping Nearby, Ski Hill Nearby

Roof	Asphalt Shingles
Construction	Wood, Stone, Vinyl
Foundation	Concrete Perimeter

Additional Information

Date Listed	July 10th, 2025
Days on Market	20
Zoning	Zone 14
Condo Fee	\$711

DATA IS DEEMED RELIABLE BUT IS NOT GUARANTEED ACCURATE BY THE REALTORS® ASSOCIATION OF EDMONTON. COPYRIGHT 2025 BY THE REALTORS® ASSOCIATION OF EDMONTON. ALL RIGHTS RESERVED.Trademarks are owned or controlled by the Canadian Real Estate Association (CREA) and identify real estate professionals who are members of CREA (REALTOR®, REALTORS®) and/or the quality of services they provide (MLS®, Multiple Listing Service®)

Listing information last updated on July 30th, 2025 at 5:47pm MDT