

\$525,000 - 8300 151 Street, Edmonton

MLS® #E4446909

\$525,000

5 Bedroom, 2.00 Bathroom, 1,182 sqft
Single Family on 0.00 Acres

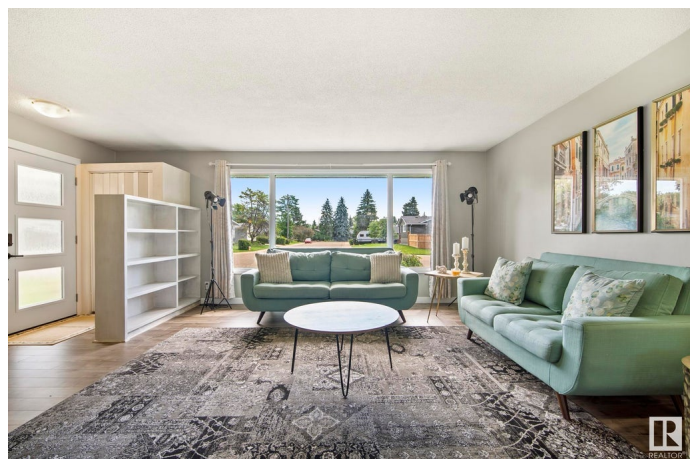
Lynnwood, Edmonton, AB

This isn't just a bungalow, it's a vibe! This cheerful home brings the perfect mix of cozy and open-concept living. The kitchen flows into the dining space that fits 10+ guestsâ€™um hello, dinner parties! Extended cabinetry=bonus storage. Two massive bedrooms and a full bath round out the main floor. Downstairs, you'll find 3 more spacious rooms, another full bath, and a huge recreational space along with tons of storage. Outside, enjoy a huge 612mÂ² fenced yard with a cement patio-perfect for summer BBQs, pets, backyard hangs along with a heated double detached garage. The west facing backyard is a gardeners delight. Recent updates include a newer furnace (2023), shingles (2021), flooring throughout, and refreshed kitchen cabinets. Let's not forget location-7 min drive to the zoo/Laurier park, easy access to the Whitemud, prime street within Lynnwood that's quiet and safe. This home has been lovingly maintained and is ready for its next fun-loving owners. Come see the vibe for yourselfâ€™youâ€™™ll fall in love!

Built in 1959

Essential Information

MLS® #	E4446909
Price	\$525,000



Bedrooms	5
Bathrooms	2.00
Full Baths	2
Square Footage	1,182
Acres	0.00
Year Built	1959
Type	Single Family
Sub-Type	Detached Single Family
Style	Bungalow
Status	Active

Community Information

Address	8300 151 Street
Area	Edmonton
Subdivision	Lynnwood
City	Edmonton
County	ALBERTA
Province	AB
Postal Code	T5R 1H6

Amenities

Amenities	On Street Parking, No Smoking Home
Parking	Double Garage Detached

Interior

Appliances	Dishwasher-Built-In, Dryer, Hood Fan, Refrigerator, Stove-Electric, Washer, Window Coverings
Heating	Forced Air-1, Natural Gas
Fireplace	Yes
Fireplaces	Brick Facing
Stories	2
Has Basement	Yes
Basement	Full, Finished

Exterior

Exterior	Wood, Stucco, Vinyl
Exterior Features	Fenced, Flat Site, Playground Nearby, Public Transportation, Schools, Shopping Nearby
Roof	Asphalt Shingles

Construction	Wood, Stucco, Vinyl
Foundation	Concrete Perimeter

School Information

Elementary	Lynnwood School
Middle	Parkview School
High	Jasper Place

Additional Information

Date Listed	July 10th, 2025
Days on Market	9
Zoning	Zone 22

DATA IS DEEMED RELIABLE BUT IS NOT GUARANTEED ACCURATE BY THE REALTORS® ASSOCIATION OF EDMONTON. COPYRIGHT 2025 BY THE REALTORS® ASSOCIATION OF EDMONTON. ALL RIGHTS RESERVED.Trademarks are owned or controlled by the Canadian Real Estate Association (CREA) and identify real estate professionals who are members of CREA (REALTOR®, REALTORS®) and/or the quality of services they provide (MLS®, Multiple Listing Service®)

Listing information last updated on July 19th, 2025 at 7:17am MDT