

Courtesy Of Aldo Esposito Of Century 21 Masters

# \$394,000 - 193 Hyndman Crescent, Edmonton

MLS® #E4449906

**\$394,000**

3 Bedroom, 2.00 Bathroom, 938 sqft  
Single Family on 0.00 Acres

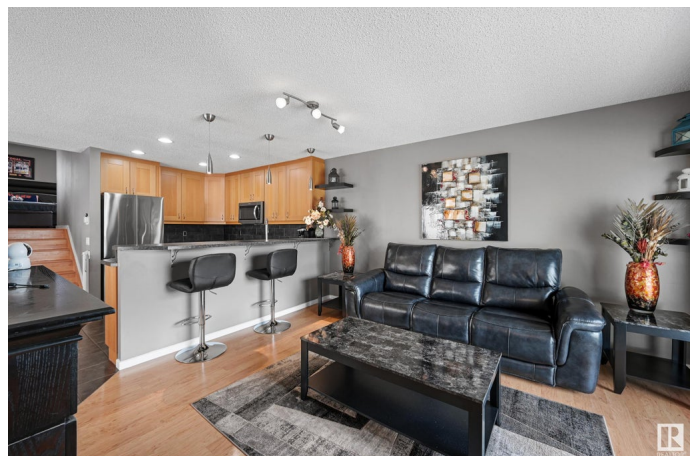
Canon Ridge, Edmonton, AB

Welcome to this Completely Renovated 3 bedroom home in Mint Condition! Your oversized 23' dream garage is heated, insulated, has plenty of room for all of your toys and has loads of storage in the rafters! Inside, extensive renovations and updates include Kitchen, Appliances, Bathrooms, Central Air Conditioning, Hot Water on Demand, Furnace, New Exterior Doors, Water Softener, Flooring, Paint, Refinished Deck and More! Upstairs, find your giant master with full ensuite, plus two additional bedrooms downstairs. You'll love all of the extra space including a family room, games area, and home theatre! Welcome to a great family neighbourhood, just steps to the river valley, shopping, transit and parks.

Built in 1989

## Essential Information

MLS® #	E4449906
Price	\$394,000
Bedrooms	3
Bathrooms	2.00
Full Baths	2
Square Footage	938
Acres	0.00
Year Built	1989



Type	Single Family
Sub-Type	Detached Single Family
Style	4 Level Split
Status	Active

### **Community Information**

Address	193 Hyndman Crescent
Area	Edmonton
Subdivision	Canon Ridge
City	Edmonton
County	ALBERTA
Province	AB
Postal Code	T5A 4X6

### **Amenities**

Amenities	Air Conditioner, R.V. Storage, Workshop
Parking Spaces	4
Parking	Double Garage Detached, Heated, Insulated, Over Sized

### **Interior**

Interior Features	ensuite bathroom
Appliances	Air Conditioning-Central, Dishwasher-Built-In, Freezer, Microwave Hood Fan, Stacked Washer/Dryer, Storage Shed, Stove-Electric, Window Coverings, Refrigerators-Two, Garage Heater
Heating	Forced Air-1, Natural Gas
Stories	4
Has Basement	Yes
Basement	Full, Finished

### **Exterior**

Exterior	Wood, Stucco
Exterior Features	Fenced, Flat Site, Golf Nearby, Level Land, Low Maintenance Landscape, Public Transportation, Schools, Shopping Nearby
Roof	Asphalt Shingles
Construction	Wood, Stucco
Foundation	Concrete Perimeter

### **School Information**

Elementary	Overlanders, Abbott
Middle	St. Elizabeth Seton, JD Bra

High Austin O'Brien, Eastglen

### **Additional Information**

Date Listed July 26th, 2025

Days on Market 14

Zoning Zone 35

DATA IS DEEMED RELIABLE BUT IS NOT GUARANTEED ACCURATE BY THE REALTORS® ASSOCIATION OF EDMONTON. COPYRIGHT 2025 BY THE REALTORS® ASSOCIATION OF EDMONTON. ALL RIGHTS RESERVED. Trademarks are owned or controlled by the Canadian Real Estate Association (CREA) and identify real estate professionals who are members of CREA (REALTOR®, REALTORS®) and/or the quality of services they provide (MLS®, Multiple Listing Service®)

Listing information last updated on August 9th, 2025 at 8:47pm MDT