

\$975,000 - 100 50054 Rge Road 232, Rural Leduc County

MLS® #E4459033

\$975,000

3 Bedroom, 2.50 Bathroom, 2,051 sqft

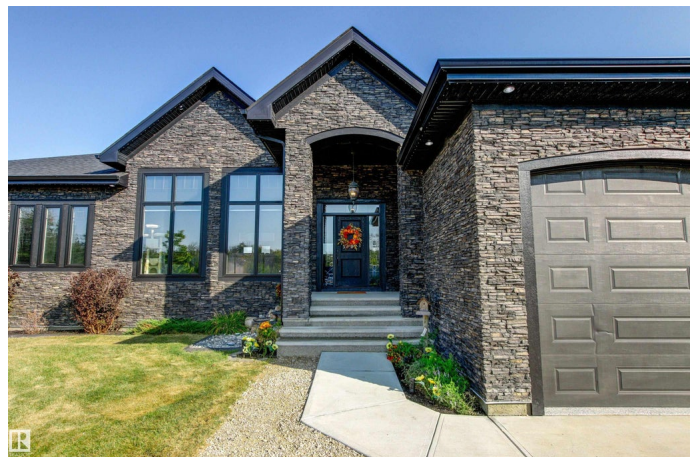
Rural on 2.55 Acres

Rosewood Estates_LEDU, Rural Leduc County, AB

Incredible Custom Built Bungalow in Rosewood Estates! 2.55 acres offering a scenic balance of trees & view of the subdivision from the highpoint of the community. Enjoy over 2050sqft showcasing elegant custom kitchen w/ solid wood cabinetry, stylish granite counters, lg island holds beverage cooler & microwave. KitchenAid gas stove & matching appliances plus walk-through pantry. Great Room features 12ft ceilings & beautiful stone feature wall w/gas fireplace. Primary Suite is a definite SHOWSTOPPER w/ plenty of space for king-sized suite, his & hers walk-in closets & TRUE SPA ensuite w/ huge glassed shower, inviting tub & separate vanities. 2 more large bedrooms, another full bath plus an office, laundry room, mudroom & 2pc bath complete the main level. Massive basement is ready for your development - a large steel I-Beam was used to allow for endless options. Basement & garage also offer in-floor heating...now let's talk about the ultimate garage: Epoxy floors, hot & cold water & 10ft doors! Shows 10+!

Built in 2015

Essential Information



MLS® #	E4459033
Price	\$975,000
Bedrooms	3
Bathrooms	2.50
Full Baths	2
Half Baths	1
Square Footage	2,051
Acres	2.55
Year Built	2015
Type	Rural
Sub-Type	Detached Single Family
Style	Bungalow
Status	Active

Community Information

Address	100 50054 Rge Road 232
Area	Rural Leduc County
Subdivision	Rosewood Estates_LEDU
City	Rural Leduc County
County	ALBERTA
Province	AB
Postal Code	T4X 0K8

Amenities

Features	Air Conditioner, Closet Organizers, Deck, Detectors Smoke, Fire Pit, Hot Water Instant, Hot Water Tankless, Vaulted Ceiling, Vinyl Windows, Exterior Walls 2"x8", HRV System, Natural Gas BBQ Hookup, 9 ft. Basement Ceiling
----------	--

Interior

Interior Features	ensuite bathroom
Heating	Forced Air-1, In Floor Heat System, Natural Gas, Water
Fireplace	Yes
Stories	1
Has Basement	Yes
Basement	Full, Unfinished

Exterior

Exterior	Wood
----------	------

Exterior Features	Low Maintenance Landscape, No Back Lane, No Through Road, Not Fenced, Private Setting
Construction	Wood
Foundation	Concrete Perimeter

Additional Information

Date Listed	September 23rd, 2025
Days on Market	4
Zoning	Zone 80

DATA IS DEEMED RELIABLE BUT IS NOT GUARANTEED ACCURATE BY THE REALTORS® ASSOCIATION OF EDMONTON. COPYRIGHT 2025 BY THE REALTORS® ASSOCIATION OF EDMONTON. ALL RIGHTS RESERVED.Trademarks are owned or controlled by the Canadian Real Estate Association (CREA) and identify real estate professionals who are members of CREA (REALTOR®, REALTORS®) and/or the quality of services they provide (MLS®, Multiple Listing Service®)

Listing information last updated on September 27th, 2025 at 8:02am MDT