

\$529,000 - 4610 Kinsella Landing Landing, Edmonton

MLS® #E4462420

\$529,000

3 Bedroom, 2.50 Bathroom, 1,651 sqft
Single Family on 0.00 Acres

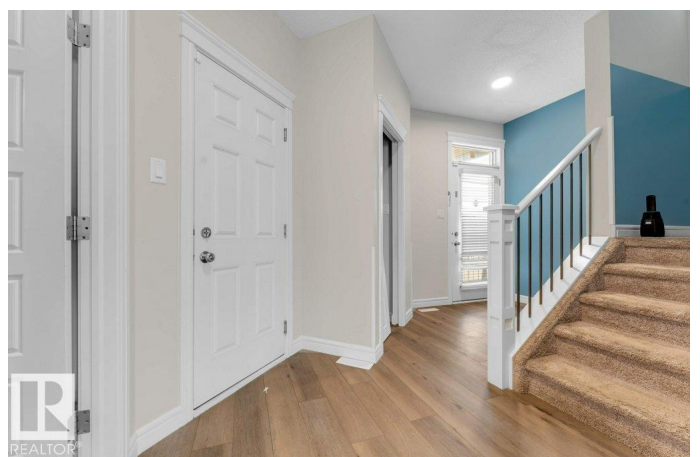
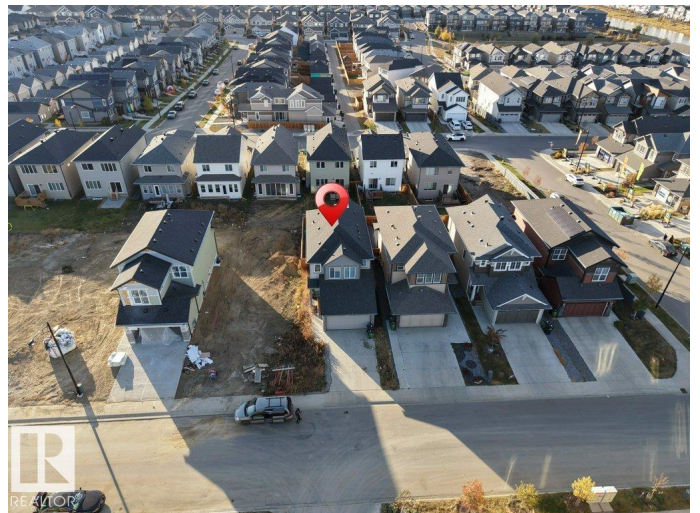
Keswick, Edmonton, AB

A Perfect Starter Home! Check out this beautifully designed 1650 Sq Ft house in most popular community - Keswick that accommodates 3 bedrooms, 2.5 bathrooms, Kitchen, living room, dining & a bonus room. Upgraded kitchen comes with beautiful quartz counter tops and an Island. Be ready to soak Sun on huge Deck. Partially finished basement awaits your final touches. Upgraded exterior elevation with stone, premium vinyl siding and front concrete steps. Complete with a double-car garage, this home combines style, function, and investment potential – all in one of Edmonton’s most desirable new communities! Walking distance to pond, trail, and park & Joey Moss School.

Built in 2019

Essential Information

MLS® #	E4462420
Price	\$529,000
Bedrooms	3
Bathrooms	2.50
Full Baths	2
Half Baths	1
Square Footage	1,651
Acres	0.00
Year Built	2019



Type	Single Family
Sub-Type	Detached Single Family
Style	2 Storey
Status	Active

Community Information

Address	4610 Kinsella Landing Landing
Area	Edmonton
Subdivision	Keswick
City	Edmonton
County	ALBERTA
Province	AB
Postal Code	T6W 4K1

Amenities

Amenities	Detectors Smoke, No Animal Home, No Smoking Home, Vaulted Ceiling
Parking Spaces	4
Parking	Double Garage Attached

Interior

Interior Features	ensuite bathroom
Appliances	Dishwasher-Built-In, Dryer, Garage Control, Garage Opener, Hood Fan, Refrigerator, Stove-Electric, Washer, Window Coverings
Heating	Forced Air-1, Natural Gas
Stories	2
Has Basement	Yes
Basement	Full, Partially Finished

Exterior

Exterior	Wood, Stone, Vinyl
Exterior Features	Park/Reserve, Playground Nearby, Public Transportation, Schools
Roof	Asphalt Shingles
Construction	Wood, Stone, Vinyl
Foundation	Concrete Perimeter

Additional Information

Date Listed	October 16th, 2025
Days on Market	14
Zoning	Zone 56

DATA IS DEEMED RELIABLE BUT IS NOT GUARANTEED ACCURATE BY THE REALTORS® ASSOCIATION OF EDMONTON. COPYRIGHT 2025 BY THE REALTORS® ASSOCIATION OF EDMONTON. ALL RIGHTS RESERVED. Trademarks are owned or controlled by the Canadian Real Estate Association (CREA) and identify real estate professionals who are members of CREA (REALTOR®, REALTORS®) and/or the quality of services they provide (MLS®, Multiple Listing Service®)

Listing information last updated on October 30th, 2025 at 12:02am MDT